

Wabamun Area Vision

Parkland County is creating a long-range vision for the Wabamun Area.

This work will inform the future of the region, helping the County make consistent, coordinated decisions about planning and development.

Project Study Area

The project study area for the Wabamun Area Vision includes:

- The watershed of Wabamun Lake (the land area that feeds the lake and has a direct impact on water quality)
- The TransAlta mine lands to the north and south of the lake
- The Hamlet of Wabamun



Engagement Timeline

Spring 2022

STAGE 1

Confirmation of Draft
Pillars and Vision

Summer 2022

STAGE 2

Feedback on completed
work and brainstorming
implementation actions

Fall 2022

STAGE 3

Showcasing Draft
Long-Range Plan and
prioritizing actions

Spring 2023

STAGE 4

Public hearing for Hamlet
Area Redevelopment Plan

Vision & Pillars

The project vision describes an aspirational future for the Wabamun Area, which will help the region thrive through changing times. The six pillars form the basis of the vision and will serve as guiding principles in the plans.

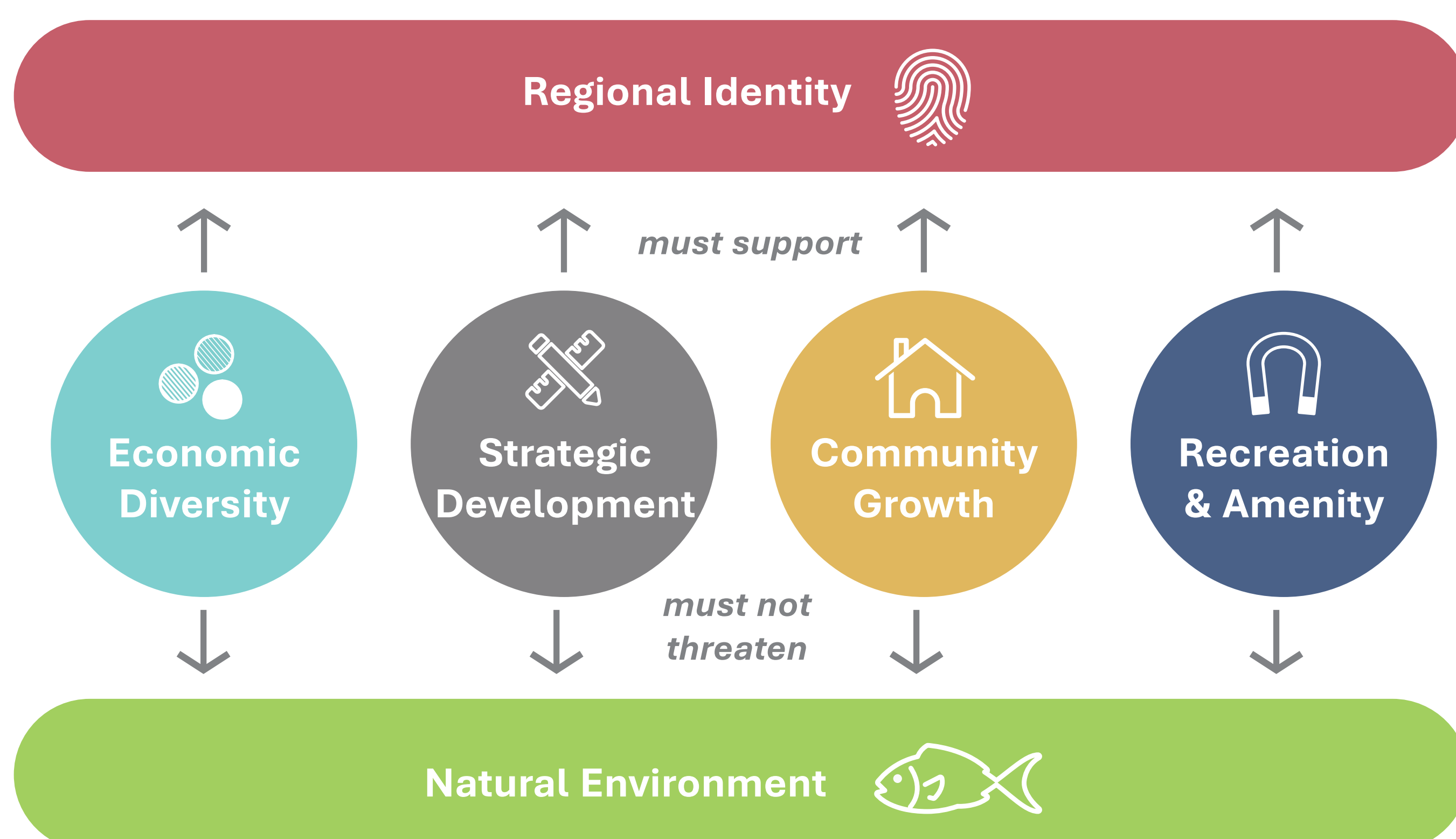
Vision

The Wabamun Lake area will leverage its unique natural and industrial assets, enabling its transformation into a thriving regional anchor.

- Premised on healthy and well-connected ecologies for all generations.
- Energized by diverse, year-round economic drivers and employment.
- Strategically planned to create a connected rural region.
- Sharing its community spirit to attract a wide range of families and lifestyles.
- With an exciting collection of recreation sites and amenities.
- Widely known as a beautiful, unique, and accessible regional destination.

Pillars

Of the six pillars, the natural environment pillar is foundational to the overall vision all other pillars. In turn, all of the pillars work together to contribute toward an overall regional identity.



What You Said



411

Online Survey Responses



231

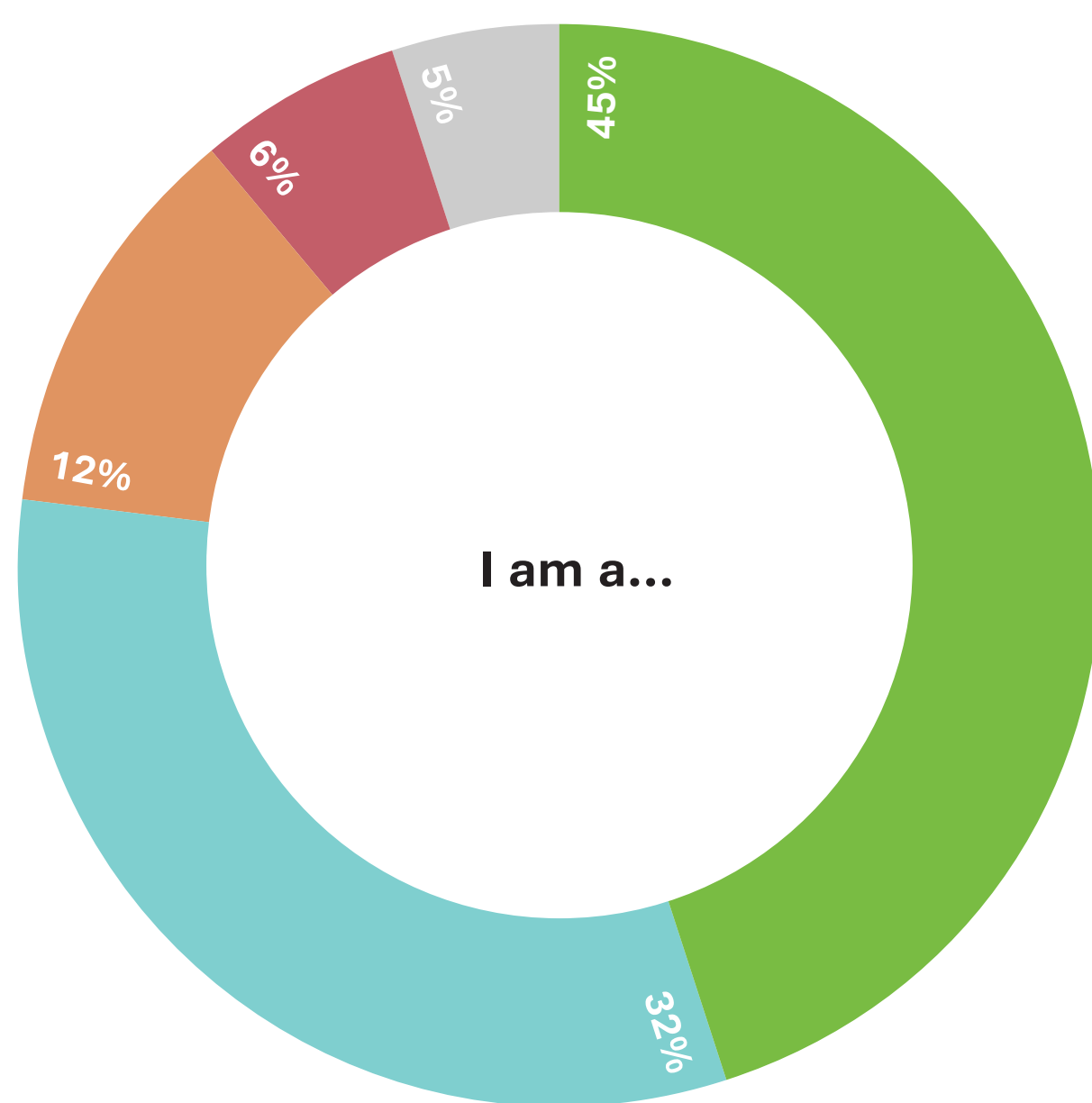
Online Map Comments



1200+

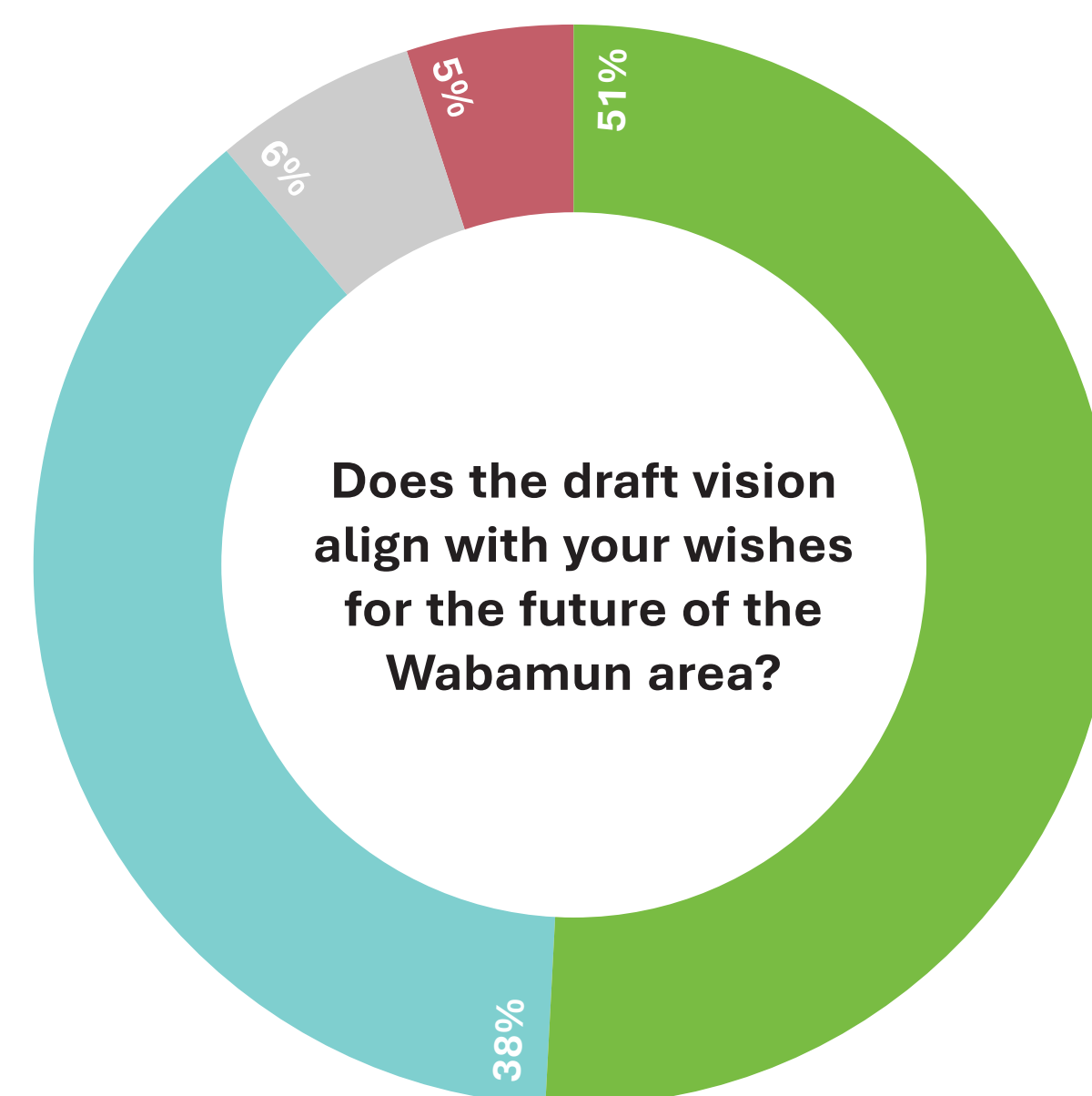
Unique visitors to the website

Who We Heard From



- Permanent resident of the Wabamun area
- Seasonal/temporary resident of the Wabamun area
- Permanent resident of another area in Parkland County
- Visitor to the Wabamun area
- Other

Agreement with the Draft Vision



- Yes
- Somewhat
- Don't Know
- No

Key Themes



Lake Health

Participants identified the lake as a key part of Wabamun's identity and wish for it to be protected.



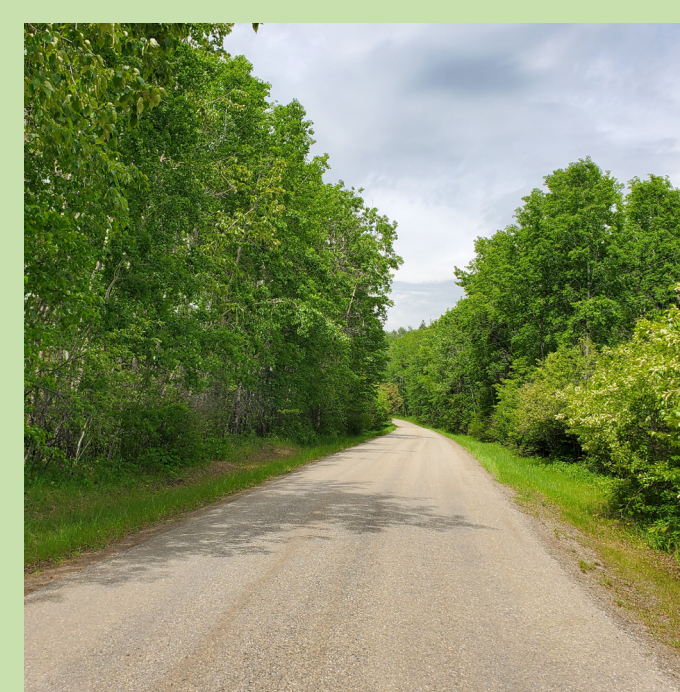
Amenities for Youth and Seniors

Housing and leisure opportunities for seniors were identified as essential while opportunities for youth are important to fostering community growth.



Natural Areas and Recreation

People love the natural areas around Wabamun and want more opportunities for year-round recreation.



Trail Connectivity

Residents and visitors love the trails around Wabamun and wish to see more trail connectivity, especially with the lake and provincial park.

Wabamun Area

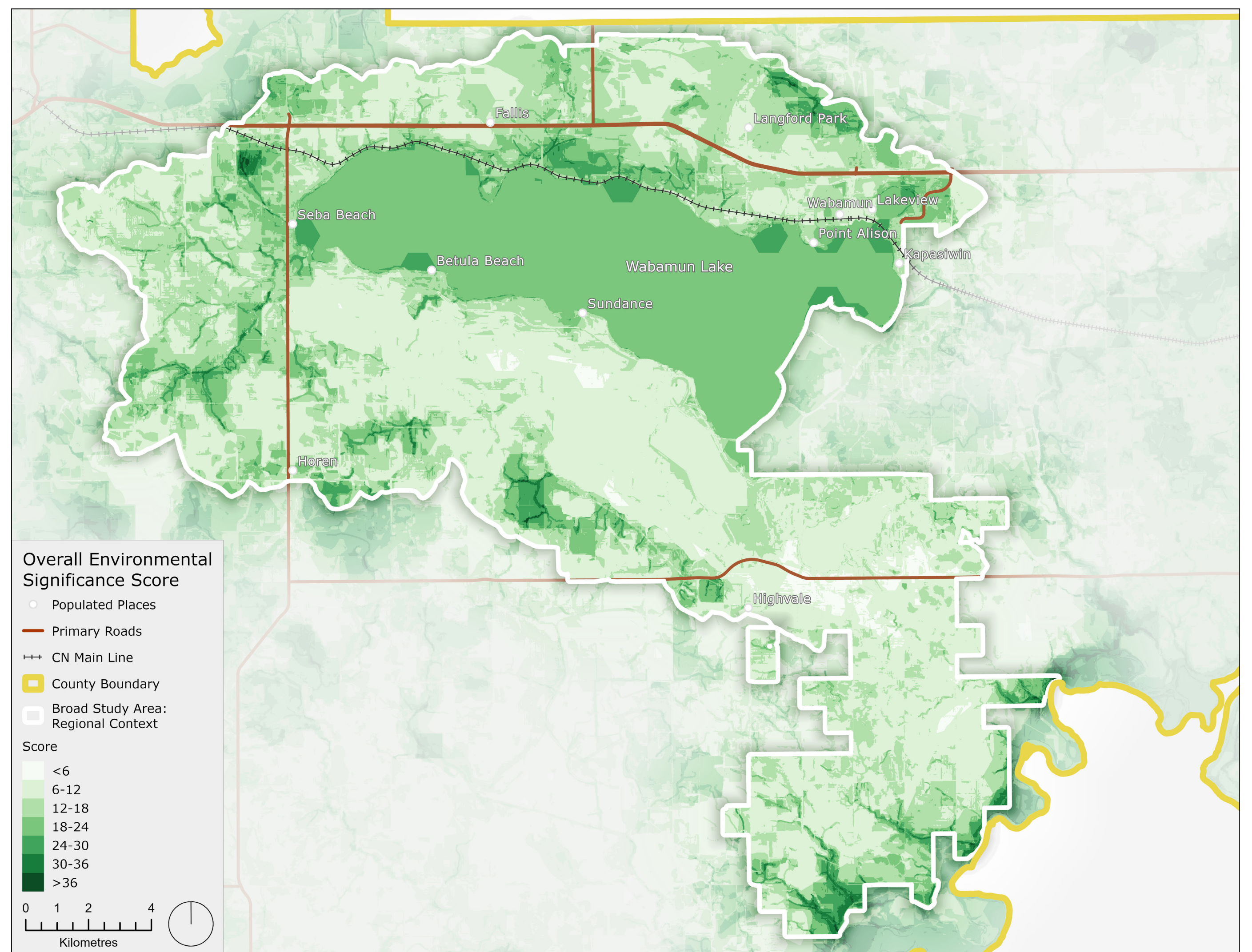
The long-range plan for the Wabamun Area will set out priority areas for different types of future development.

Environmental Analysis

We heard that protecting natural areas and the health of the lake was a key priority heard in Stage 1.

The project team conducted an environmental analysis which looks at sensitive areas, existing watershed management plans, lake protection, habitat, and other natural features.

This study will help to ensure that all future development opportunities consider these natural spaces and their lake health.



Locating Development Types

In Stage 2, we have identified some suitable locations for the main uses identified in Stage 1. Of the suitable locations that we have identified, we want to know where you think the various use types should be prioritized in the area.

There are 9 main uses that were identified in Stage 1:

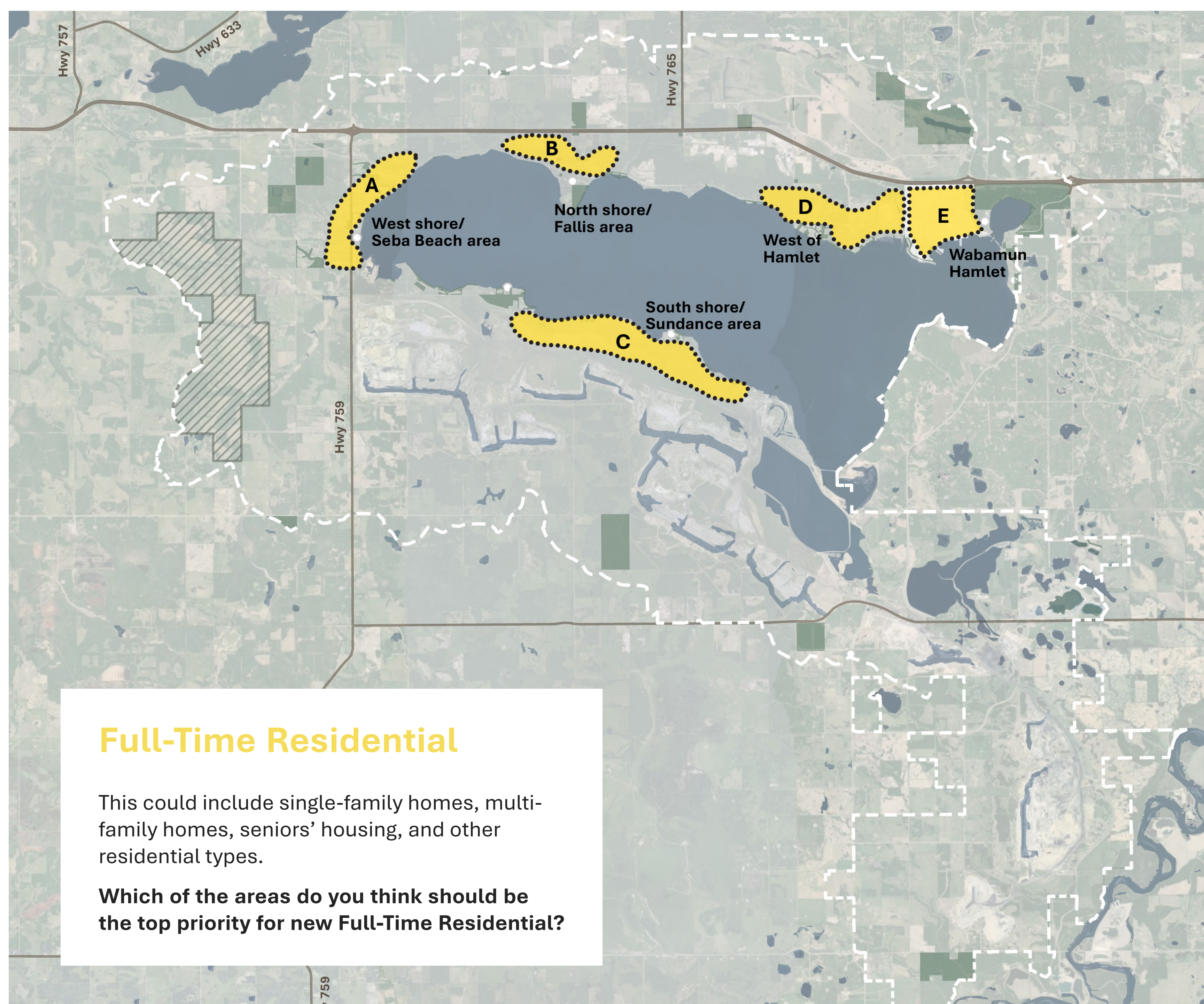
- Full-Time Residential
- Vacation Residential
- Destination Resort
- Commercial
- Energy and Production
- Motorized Recreation
- Non-motorized Recreation
- Agriculture
- Reclaimed/Preserved Natural Areas

Locating Development Types

Activity Instructions

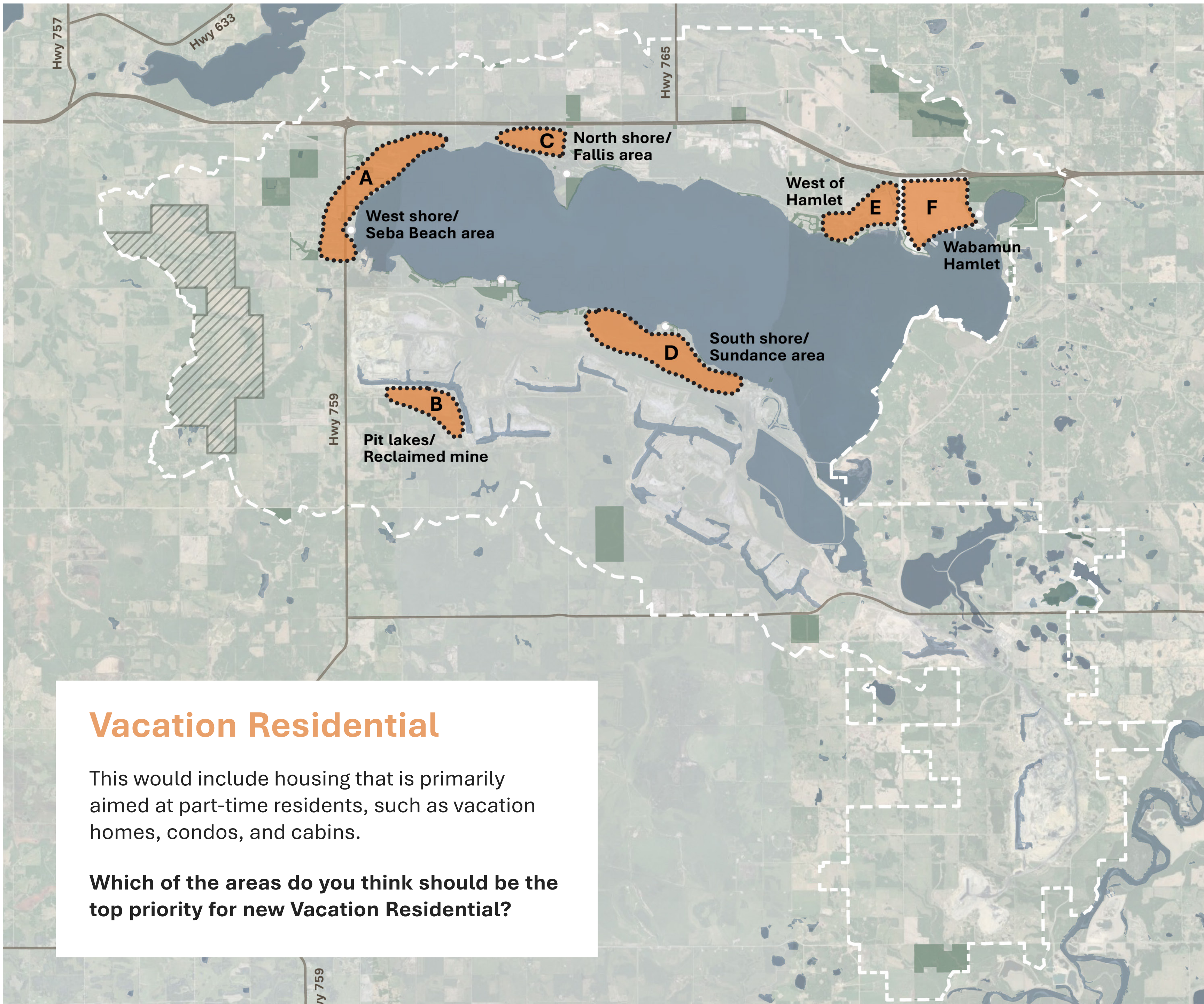
The following activity contains maps for the 9 development types. The maps show potential locations for that type of development based off of our project team's analysis. The maps only reflect potential locations, not how much land should be dedicated to each use.

1. Place a dot on the area of the map where the type of development should be prioritized.
2. If you wish, tell us why you want your area prioritized by writing a comment on a sticky note.

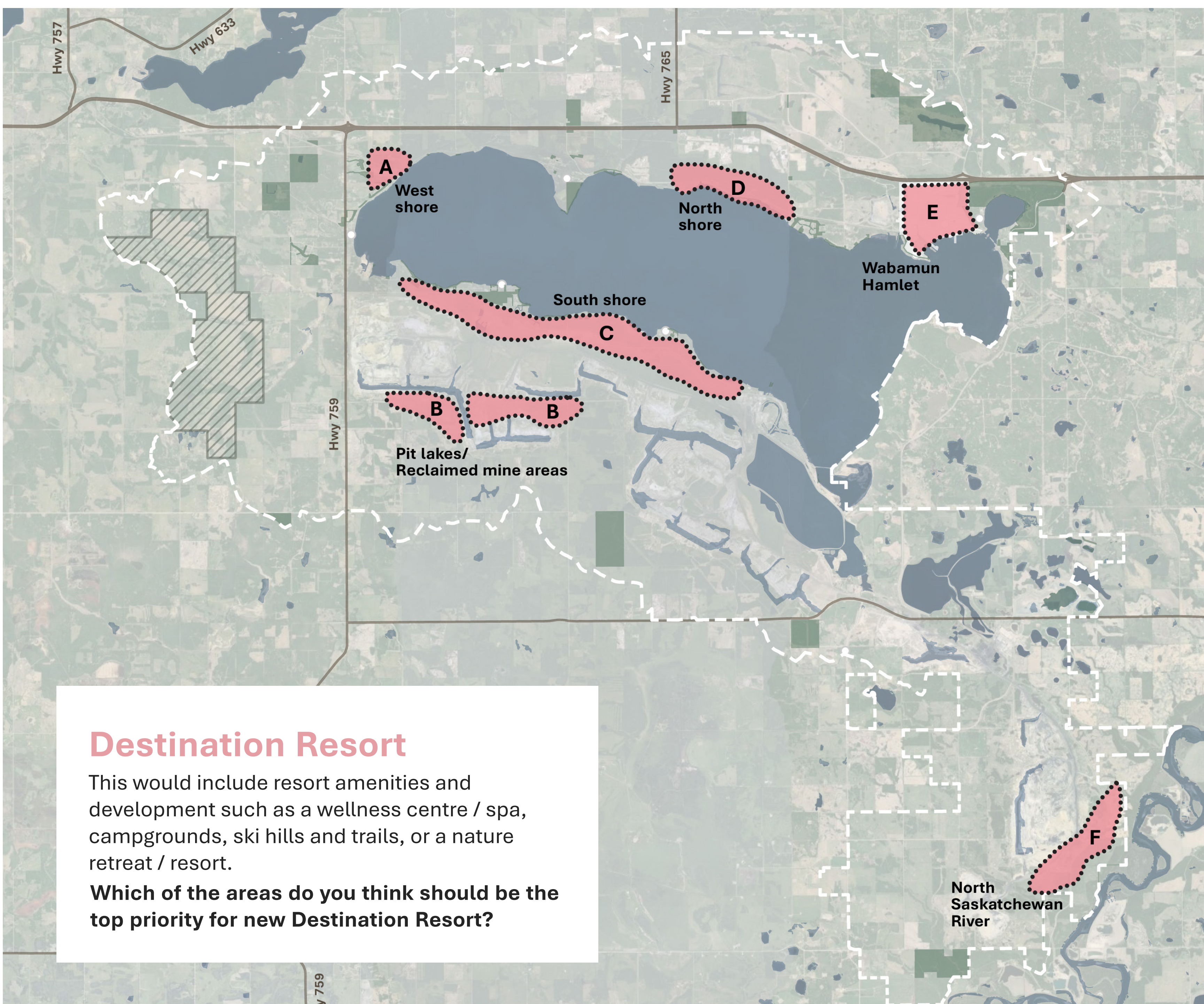


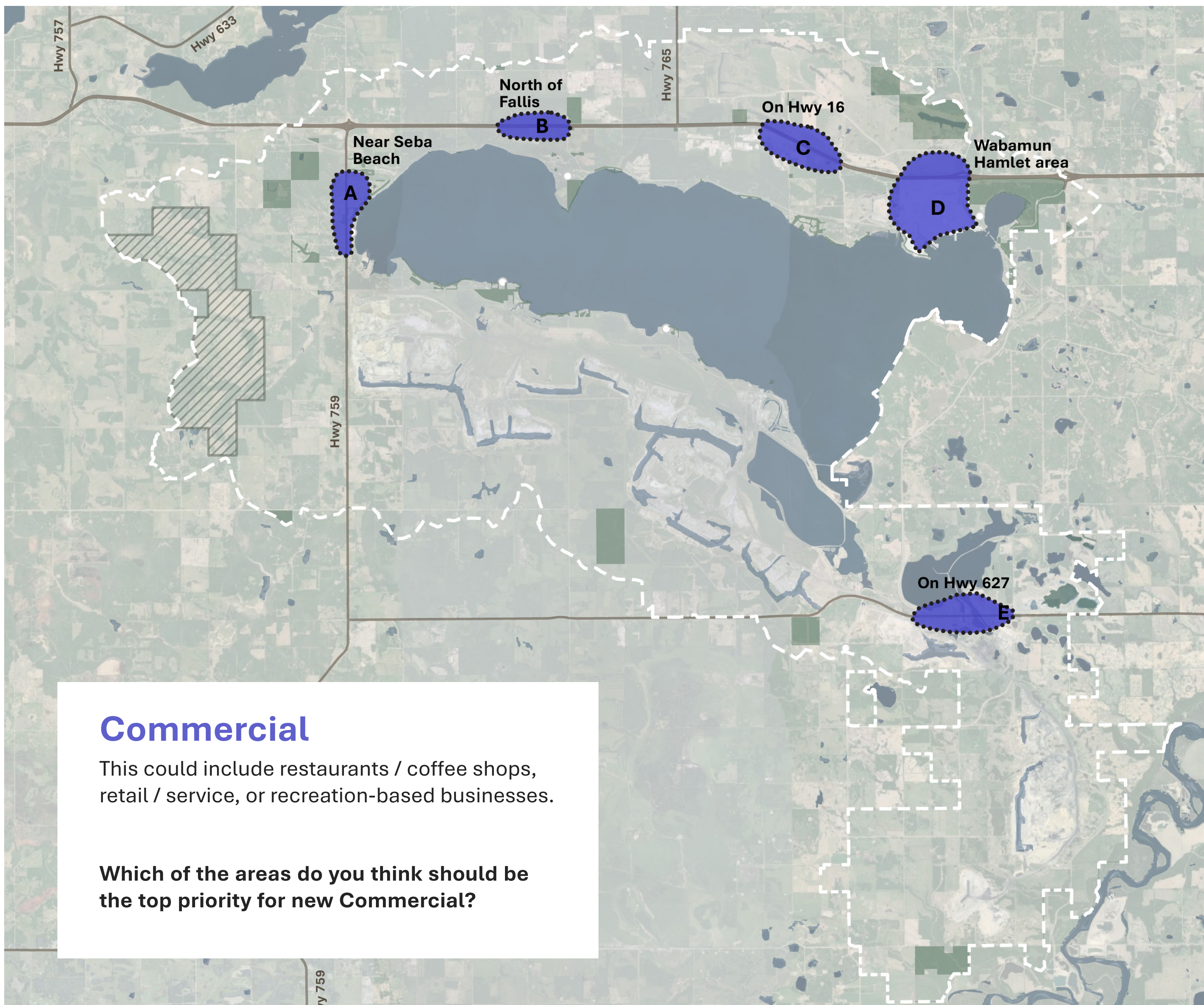
Tell us why:

Tell us why:



Tell us why:



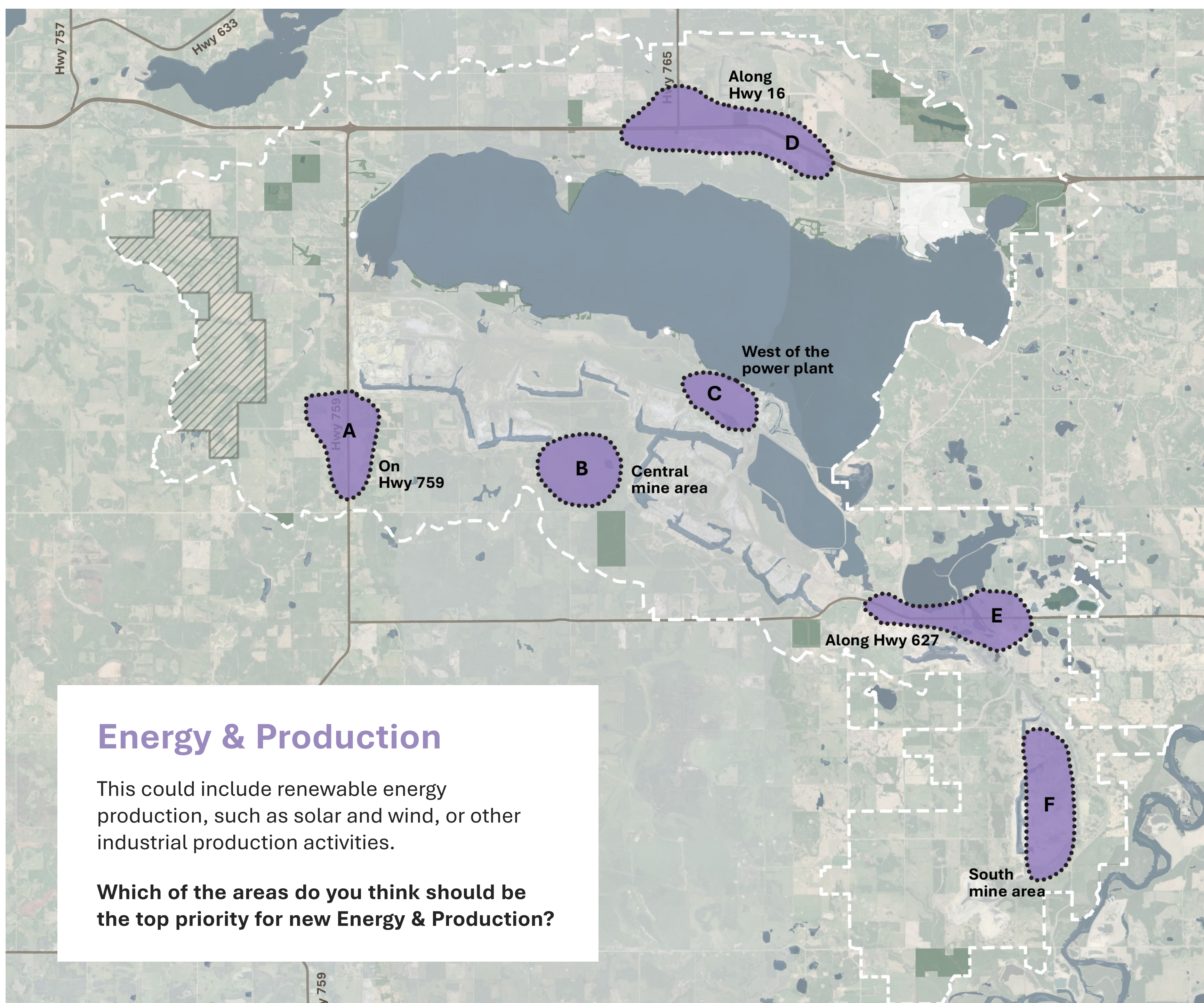


Tell us why:

Commercial

This could include restaurants / coffee shops, retail / service, or recreation-based businesses.

Which of the areas do you think should be the top priority for new Commercial?



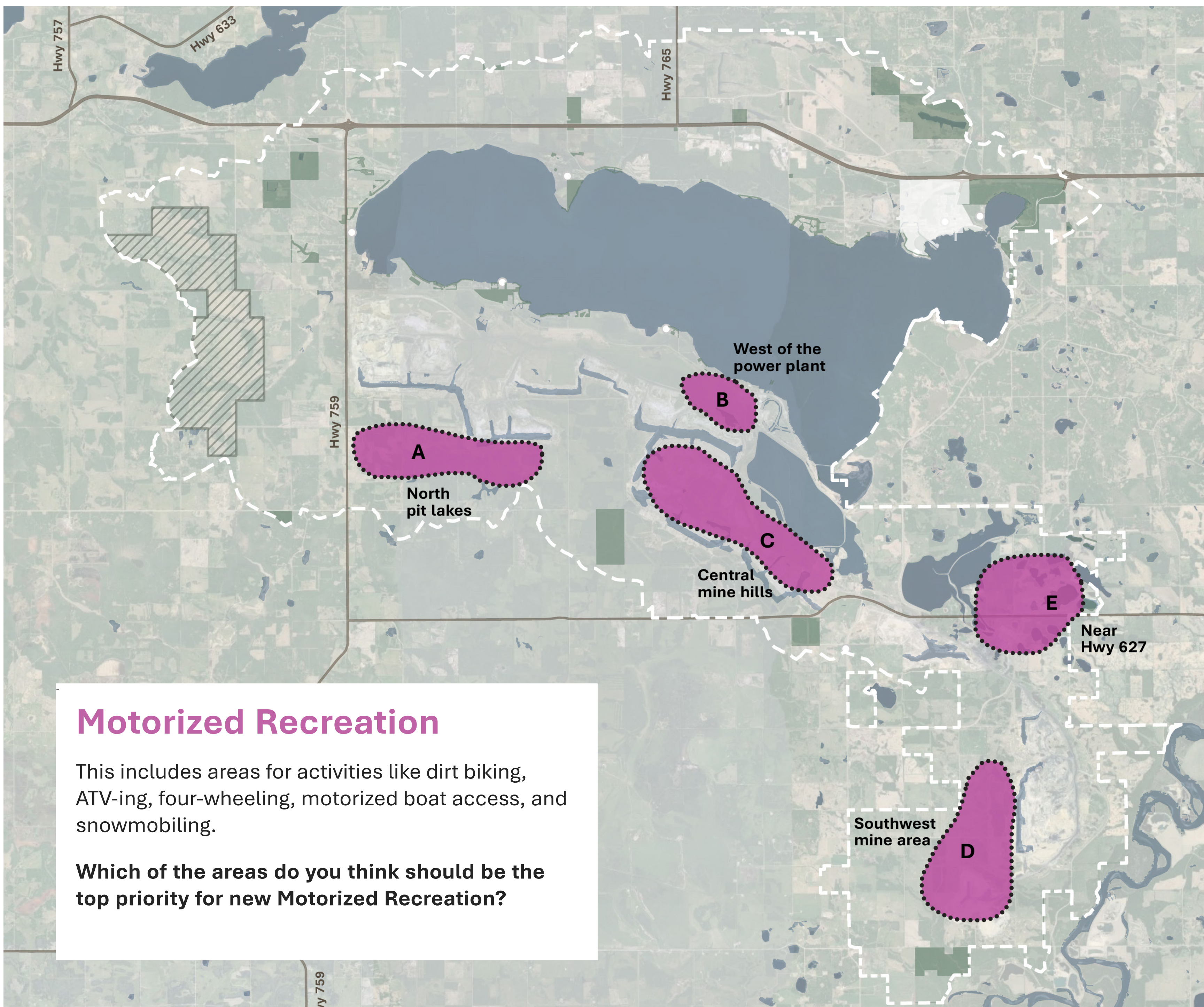
Tell us why:

Energy & Production

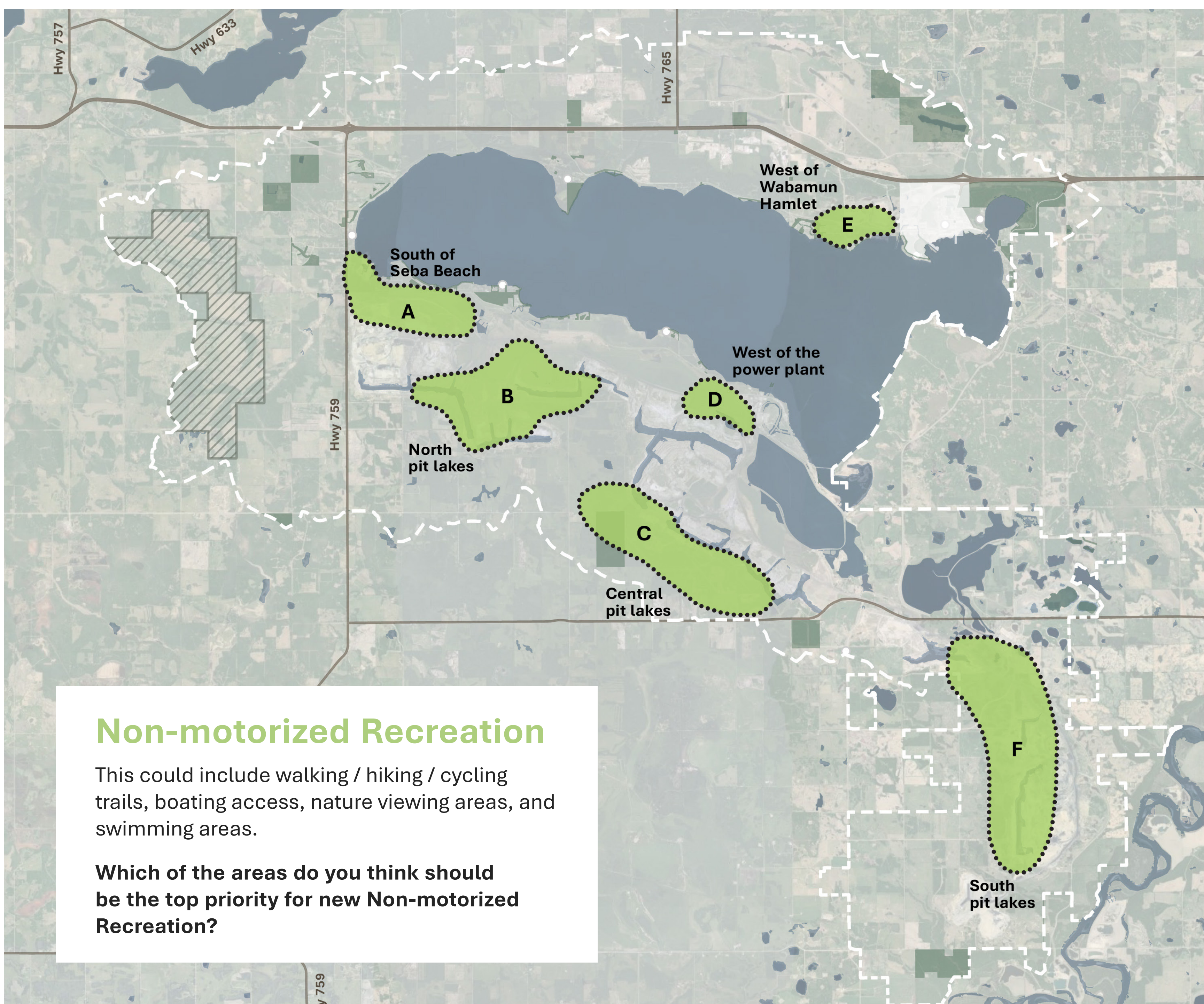
This could include renewable energy production, such as solar and wind, or other industrial production activities.

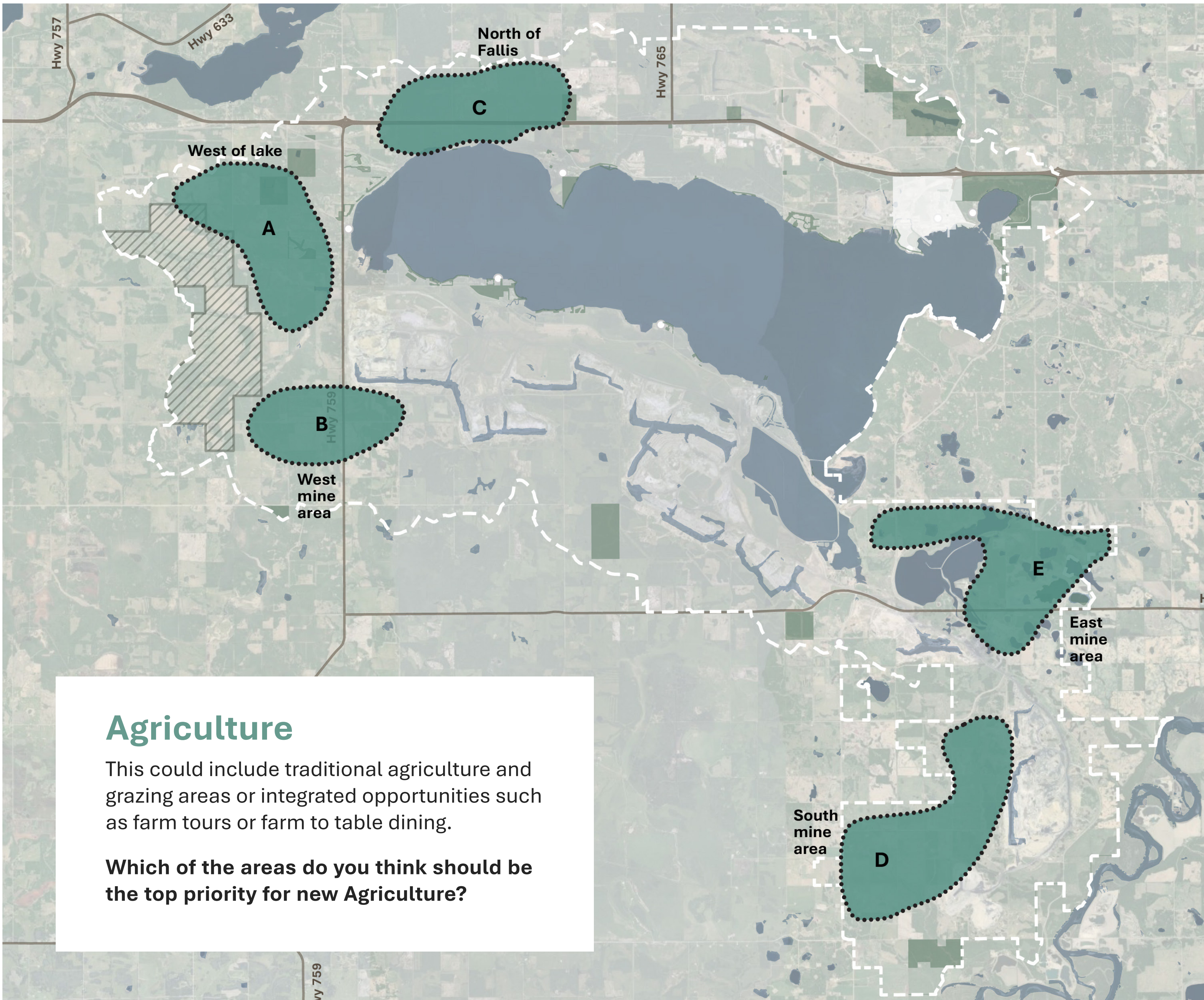
Which of the areas do you think should be the top priority for new Energy & Production?

Tell us why:



Tell us why:



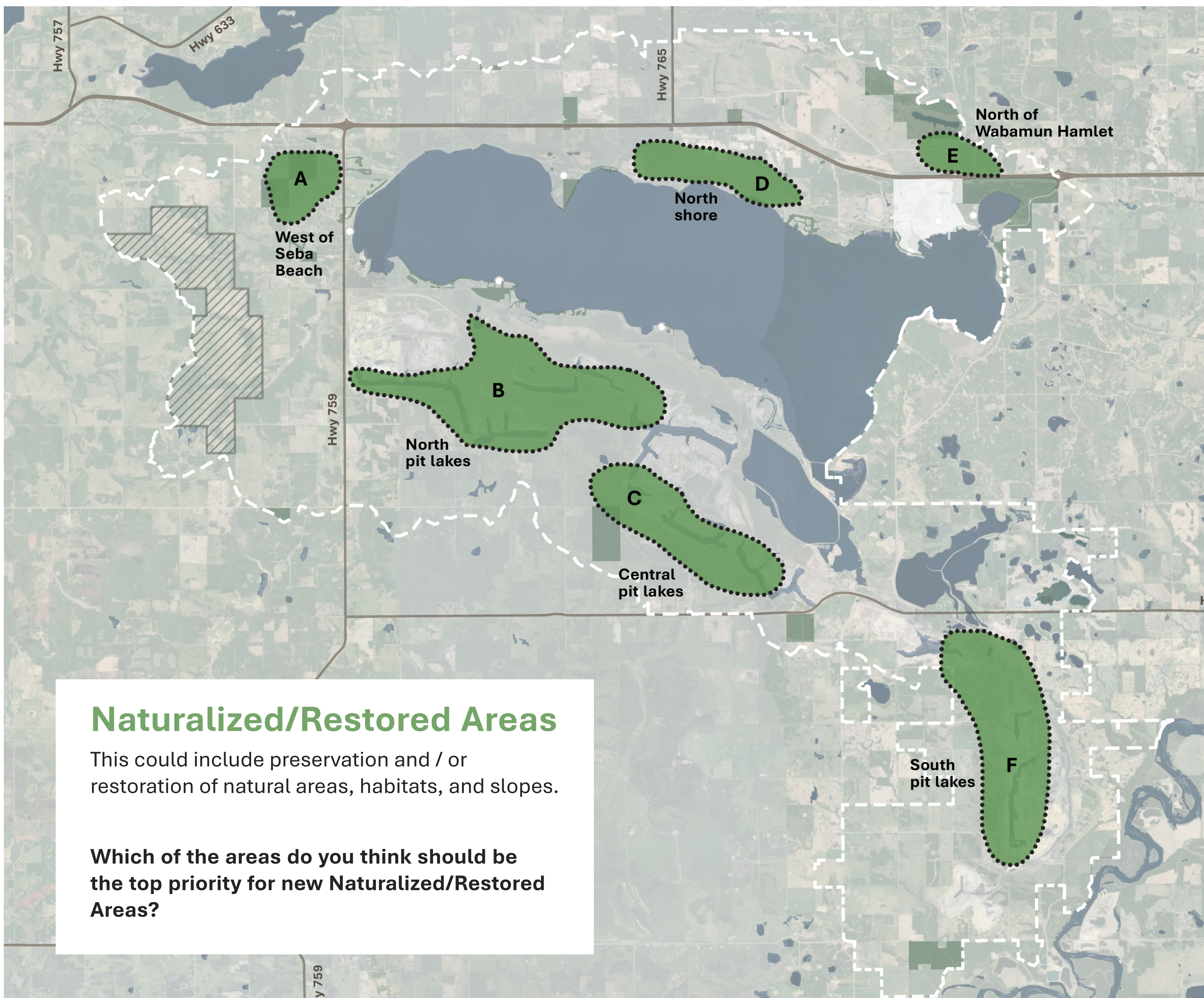


Tell us why:

Agriculture

This could include traditional agriculture and grazing areas or integrated opportunities such as farm tours or farm to table dining.

Which of the areas do you think should be the top priority for new Agriculture?



Tell us why:

Naturalized/Restored Areas

This could include preservation and / or restoration of natural areas, habitats, and slopes.

Which of the areas do you think should be the top priority for new Naturalized/Restored Areas?

Hamlet of Wabamun

The Hamlet of Wabamun Area Redevelopment Plan is a land use plan specific to the Hamlet of Wabamun. It will replace the Village of Wabamun's Municipal Development Plan (MDP). The ARP will provide future land use, transportation, servicing, and public space priorities along with a series of actions to revitalize the area over the next 15 years.

Key Places

The Hamlet ARP will provide guidance for future public and private investment, such as recommendations for streetscape or public space upgrades, new activities, or repurposing of public buildings.

Which places should be prioritized for reimagination and reinvestment?



Hamlet Implementation Actions

Help us brainstorm and imagine ways to improve the Hamlet.

Upgrades

Physical built improvements to the public realm, infrastructure, and buildings
(Ex: Streetscape improvement programs)

Incentives

“Behind the scenes” tactics like grants or mechanisms that change the conditions of investment (Ex: Local business grants, event grants)

Activities

Programs or events that are intended to bring life to the hamlet and its public spaces
(Ex: Winter activity programming, food trucks)

Supports

Supports that enable facilitation and coordination of all other actions (Ex: Events and initiatives website)

What are some actions that you would like to see implemented in Wabamun?

Write your ideas on a sticky note.